

# CROWNE PLAZA®


— BY IHG —  
Plymouth

## CROWNE PLAZA PLYMOUTH

# Meetings & Events Fact Sheet


The hotel offers 6 fully equipped meeting spaces for up to 500 guests, with a dedicated Crowne Plaza Meetings Director on-site and a variety of food and drink options to suit your requirements.




 No. of bedrooms  
211

 Gym

 Pool


 130 parking  
spaces on-site

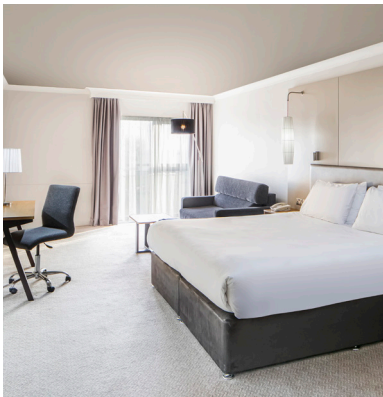
 4 charging  
points

 Plymouth Station  
(1.4 miles)

 Exeter  
(40 miles)

 6 meeting  
rooms

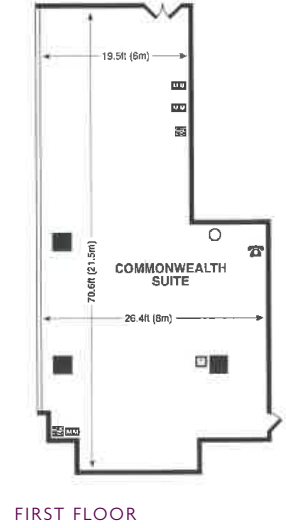
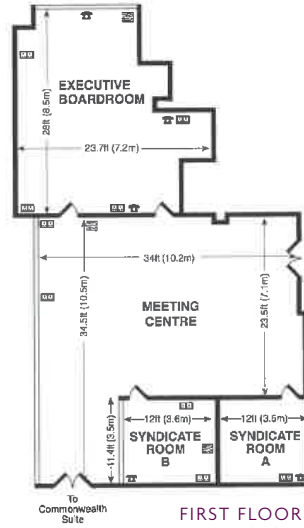
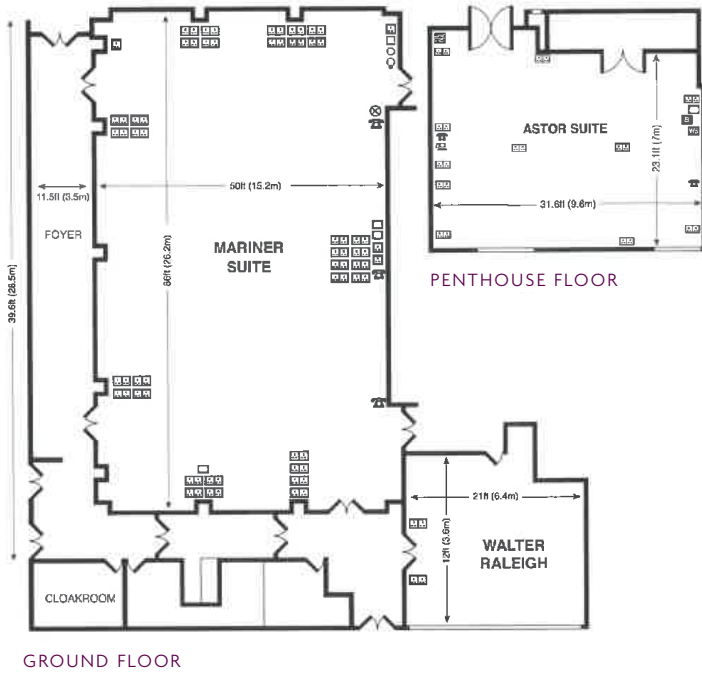
 Outdoor dining  
capacity of 60



	DIMENSIONS	CLASSROOM	THEATRE	BOARDROOM	CABARET	RECEPTION	BANQUETING
<b>GROUND</b>	LxWxH (m)						
Mariner Suite	26.2x15.2x5.1	260 (200)	450 (350)	60	240 (200)	500	380
Walter Raleigh Suite	6.4x3.6x2.4	20	30	20	18	120	N/A
<b>FIRST FLOOR</b>							
Commonwealth Suite	21.5x8x2.4	60 N/A	120 N/A	35	72 N/A	130	90
Executive Boardroom	8.5x7.2x2.4	N/A	N/A	18	N/A	N/A	N/A
Syndicate Room A	3.5x3.6x2.4	N/A	N/A	6	N/A	N/A	N/A
Syndicate Room B	3.5x3.6x2.4	N/A	N/A	6	N/A	N/A	N/A
<b>PENTHOUSE FLOOR</b>							
Astor Suite	7x9.6x2.4	20	40	24	32	45	40



## FLOOR PLANS



## KEY

- Double 13 amp socket
- Telephone point
- TV aerial
- ISDN socket
- Fax
- White-board
- Pillar
- Screen
- Public address speaker
- Dimmer
- Air-conditioning controls
- Light controls
- 3 Phase electricity supply