

CROWNE PLAZA®












— BY IHG —
Nottingham

CROWNE PLAZA NOTTINGHAM

Meetings & Events Fact Sheet

The hotel has 17 flexible meeting rooms with the largest banquet room able to host up to 400 people. Our versatile space can cater for all events and our on-site team will help with planning and catering from start to finish, easing the pressure for you.

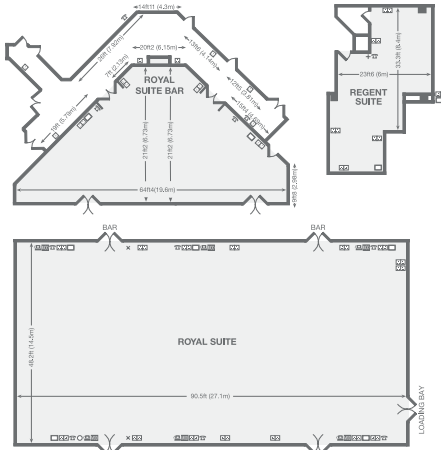


-  No. of bedrooms 210
-  56 twin rooms available
-  Gym
-  Pool
-  Spa
-  600 parking spaces. Fees may apply
-  2 charging points
-  Nottingham Station (1 mile)
-  Nottingham E. Midlands (13 miles)
-  17 meeting rooms
-  Air conditioning in all M&E rooms

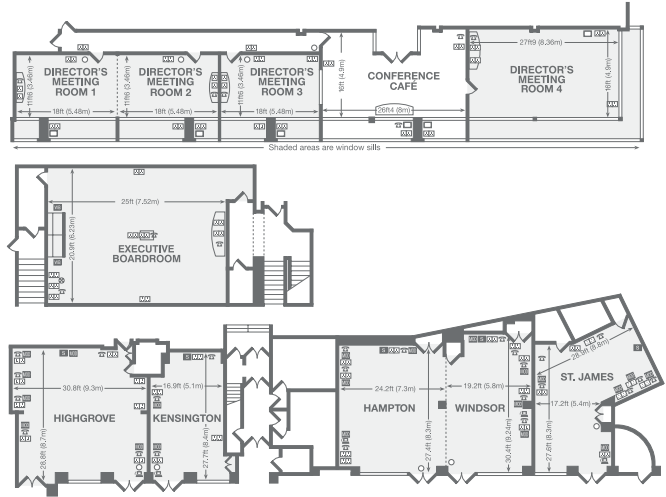
	DIMENSIONS	CLASSROOM	THEATRE	BOARDROOM	CABARET	RECEPTION
GROUND	LxWxH (m)					
Royal Suite	27.1x14.5x3.7	180 (180)	400 (350)	N/A	220 (220)	400
Regent Suite	8.4x6x2.4	14	30	20	N/A	30
FIRST FLOOR						
Directors Meeting Room 1	5.4x3.4x2.8	N/A	N/A	8	N/A	N/A
Directors Meeting Room 2	5.4x3.4x2.8	N/A	N/A	8	N/A	N/A
Directors Meeting Room 3	5.4x3.4x2.8	N/A	N/A	8	N/A	N/A
Directors Meeting Room 4	8.3x4.9x3	14	40	20	N/A	N/A
Executive Boardroom	7.5x6.2x3	N/A	N/A	14	N/A	N/A
Hampton	8.3x7.3x2.5	16	50	20	32	60
Windsor	9.2x5.8x2.5	14	40	20	24	40
Highgrove	9.3x8.7x2.5	26	70	30	40	80
Kensington	8.4x5.1x2.5	10	30	20	16	30
St James	8.3x5.4x2.5	12	30	24	24	30
MEZZANINE FLOOR						
Talbot Suite	13.3x8.9x2.4	40	100	40	48	100
Baloral Suite	7.6x5.6x2.3	12	30	15	24	30
Sandringham	7.6x5.6x2.3	12	30	15	N/A	30
Clarence Suite	4.7x4.6x2.3	N/A	N/A	6	N/A	N/A
Buckingham Suite	7.9x6.2x2.4	14	40	16	24	40

FLOOR PLANS

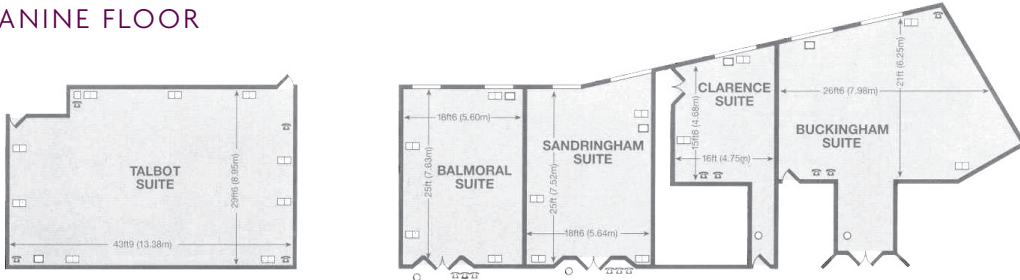
GROUND FLOOR



FIRST FLOOR



MEZZANINE FLOOR



KEY

- | | | |
|------------------------|----------------------|----------------------------|
| Single 13 amp socket | Double 13 amp socket | Telephone point |
| Modem point | ISDN socket | 3 Phase electricity supply |
| Public address speaker | Microphone point | Dimmer |
| Moveable partition | Column | TV aerial |
| | | Volume control |

