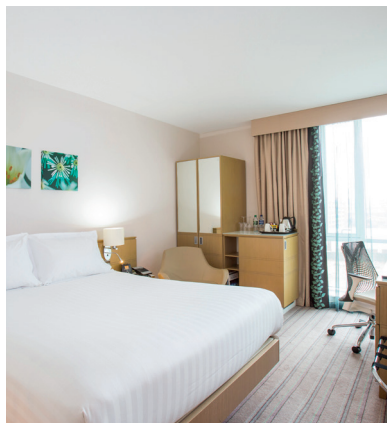





# Hilton Garden Inn Glasgow

## Meetings & Events Fact Sheet


Hilton Garden Inn Glasgow is ideally located on the OVO Hydro and SEC campus. Our flexible meeting space can accommodate meetings and events for up to 100 people. Or host an event at our riverside terrace where we can provide a great range of food and beverage packages for business or social events.



 No. of bedrooms 164

 26 twin rooms available

 Gym


 100 parking spaces on-site £8.00


 2 charging points

 Glasgow Central Station (2 miles)

 Glasgow International (9 miles)

 3 meeting rooms

 Air conditioning in all M&E rooms

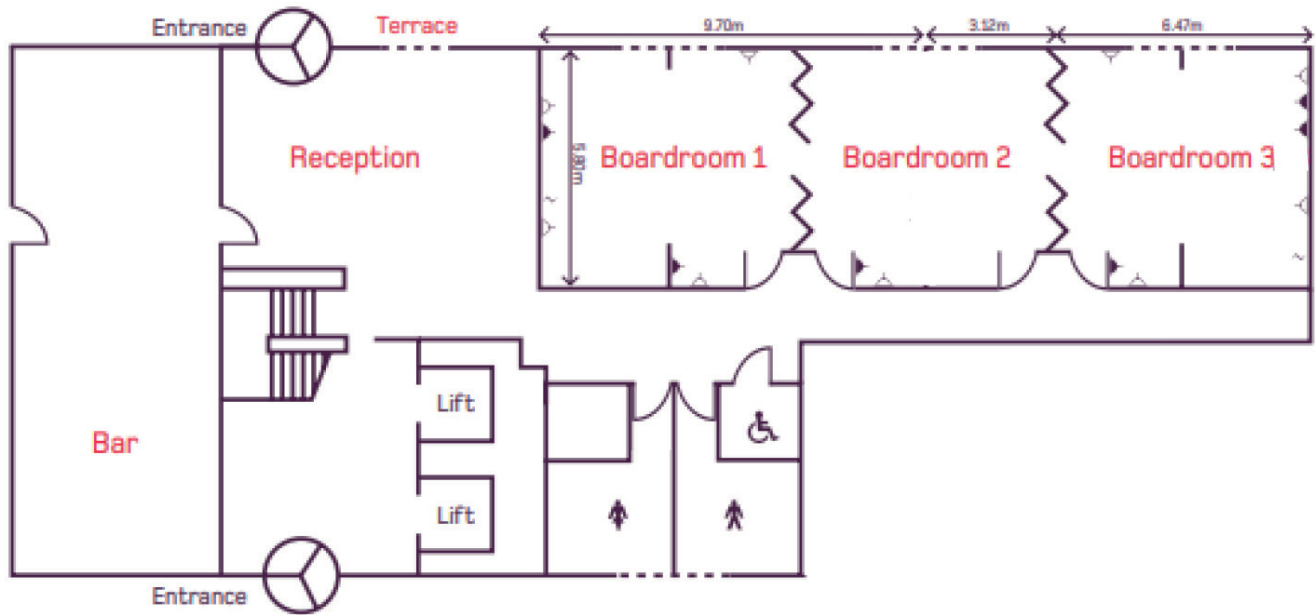
 Natural daylight in all M&E rooms

 Outdoor dining capacity of 150

	Dimensions (m)	U-shape	Theatre	Boardroom	Reception	Banquet
<b>ROOMS</b>						
Atlantic	3.2x4.7x2.7	N/A	N/A	4	20	8
Pacific	6.5x4.7x2.7	10	21	14	30	16
Lancefield	6.5x4.7x2.7	10	21	14	30	16
Finnieston	16.2x4.7x2.7	34	84	40	100	56
Atlantic/Pacific	9.7x4.7x2.7	18	42	22	60	32
Lancefield/Pacific	13x4.7x2.7	26	63	30	70	40



# FLOOR PLAN



-  Aerial Point
-  Double Socket
-  Telephone/ISDN Point
-  Floor to Ceiling Windows
-  Retractable Panels