












# CROWNE PLAZA NOTTINGHAM

## Meetings & Events Fact Sheet

The hotel has 17 flexible meeting rooms with the largest banquet room able to host up to 400 people. Our versatile space can cater for all events and our on-site team will help with planning and catering from start to finish, easing the pressure for you.

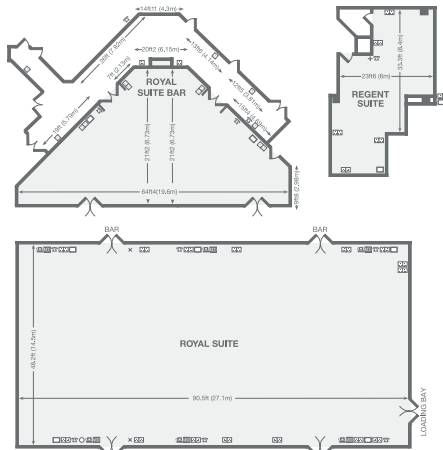


-  No. of bedrooms  
210
-  56 twin rooms  
available
-  Gym
-  Pool
-  Spa
-  600 parking  
spaces. Fees  
may apply
-  2 charging  
points
-  Nottingham  
Station (1 mile)
-  Nottingham E. Midlands  
(13 miles)
-  17 meeting  
rooms
-  Air conditioning in  
all M&E rooms

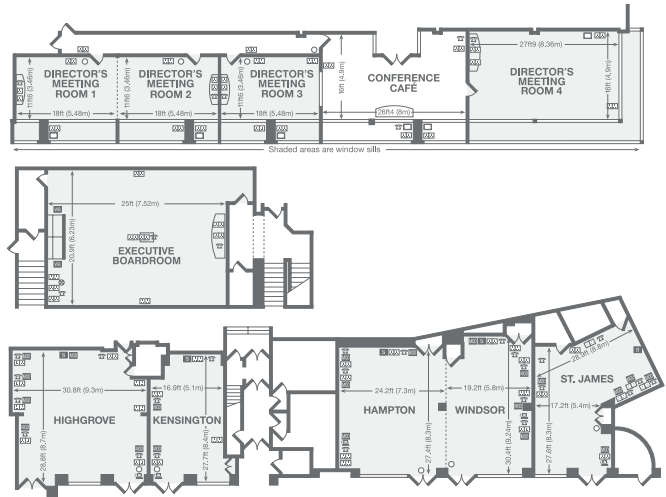
	Dimensions	Classroom	Theatre	Boardroom	Cabaret	Reception
<b>GROUND</b>						
	LxWxH (m)					
Royal Suite	27.1x14.5x3.7	180 (180)	400 (350)	N/A	220 (220)	400
Regent Suite	8.4x6x2.4	14	30	20	N/A	30
<b>FIRST FLOOR</b>						
Directors Meeting Room 1	5.4x3.4x2.8	N/A	N/A	8	N/A	N/A
Directors Meeting Room 2	5.4x3.4x2.8	N/A	N/A	8	N/A	N/A
Directors Meeting Room 3	5.4x3.4x2.8	N/A	N/A	8	N/A	N/A
Directors Meeting Room 4	8.3x4.9x3	14	40	20	N/A	N/A
Executive Boardroom	7.5x6.2x3	N/A	N/A	14	N/A	N/A
Hampton	8.3x7.3x2.5	16	50	20	32	60
Windsor	9.2x5.8x2.5	14	40	20	24	40
Highgrove	9.3x8.7x2.5	26	70	30	40	80
Kensington	8.4x5.1x2.5	10	30	20	16	30
St James	8.3x5.4x2.5	12	30	24	24	30
<b>MEZZANINE FLOOR</b>						
Talbot Suite	13.3x8.9x2.4	40	100	40	48	100
Baloral Suite	7.6x5.6x2.3	12	30	15	24	30
Sandringham	7.6x5.6x2.3	12	30	15	N/A	30
Clarence Suite	4.7x4.6x2.3	N/A	N/A	6	N/A	N/A
Buckingham Suite	7.9x6.2x2.4	14	40	16	24	40

# FLOOR PLAN

## GROUND FLOOR



## FIRST FLOOR



## MEZZANINE FLOOR



### Key

- |                        |                      |                            |
|------------------------|----------------------|----------------------------|
| Single 13 amp socket   | Double 13 amp socket | Telephone point            |
| Modem point            | ISDN socket          | 3 Phase electricity supply |
| Public address speaker | Microphone point     | Dimmer                     |
| Moveable partition     | Column               | TV aerial                  |
|                        |                      | Volume control             |

