











CROWNE PLAZA HARROGATE

Meetings & Events Fact Sheet

Located in the town centre, next door to the Harrogate Convention Centre and only a 6 minute walk from Harrogate Train Station. The hotel specialises in meetings and events and has facilities for up to 320 delegates. There are 6 meeting rooms and 214 bedrooms, all have air conditioning and a contemporary feel. There is an underground car park with 150 spaces and 2 electric car points.



-  No. of bedrooms
214
-  65 twin rooms
available
-  Gym
-  Outdoor dining
capacity of 70
-  150 parking
spaces on-site
£12.00
-  2 electric car
charging points
-  Harrogate Station
(0.5 mile)
-  Leeds Bradford
(12 miles)
-  6 meeting
rooms
-  Air conditioning in
all M&E rooms

GROUND

	Dimensions (m)	Classroom	Theatre	Boardroom	Cabaret	Reception
Harewood Suite	18.97x14.9	160	320	90	160	400
Harewood 1	10.27x14.9	60	125	50	60	140
Harewood 2	7.4x14.9	60	125	50	60	140

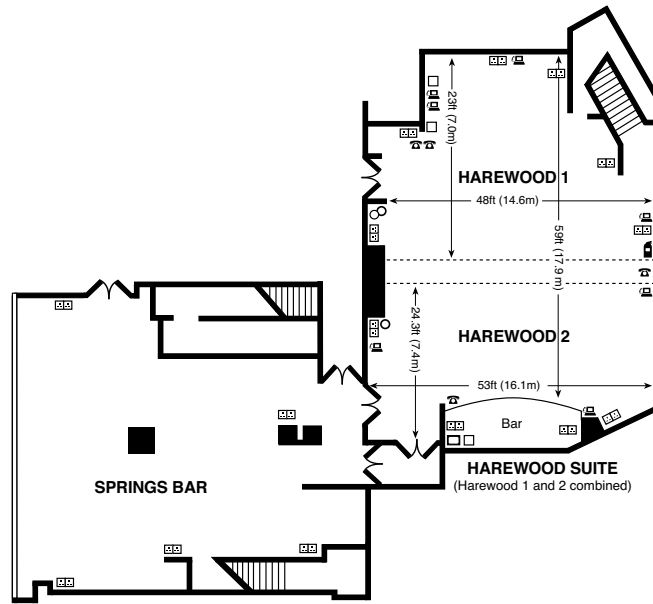
FIRST FLOOR

Ripley Suite	18.9x7.9	80	160	50	80	175
Bramham Suite	12.7x6.7	40	90	40	40	100
The Boardroom	7x5.9	N/A	N/A	12	N/A	N/A
Newby Suite	8x6.5	18	35	22	21	30
The Workbase	3.51x3.85	N/A	N/A	6	N/A	N/A

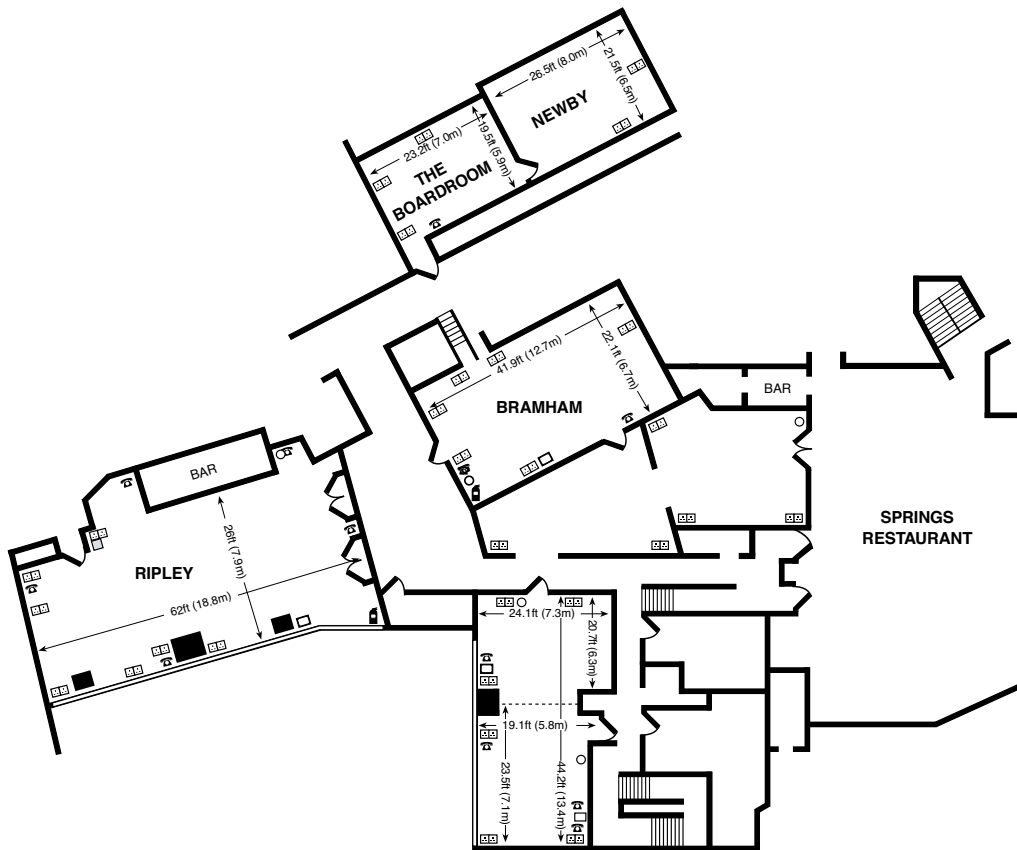


FLOOR PLANS

GROUND



FIRST



Key

Double 13 amp socket	Column	ISDN Socket
Moveable partition	TV aerial	Dimmer
Telephone point	3 Phase electricity supply	Fire apparatus

